

# Tsuru 鶴 Soars

Friends of the Gresham Japanese Garden Newsletter



## Exploratory Students Return to Al's



Photo of our 2025 interns and staff working at Al's.

started the worksite program teaching horticulture skills to students from the Gresham-Barlow School District who were enrolled in their Adult Learning Program.

Since then, the program has grown significantly. We now offer our Exploratory worksite program to the three neighboring school districts: Gresham-Barlow, Reynolds, and Centennial. This year, 14 students are enrolled.

In 2024, we established an internship with Al's Garden & Home to coincide with our horticulture program. Beginning this month, five of our students will be mentored by Al's staff,

*kamekichi, the old turtle  
machiai, the new seating area  
waiting for spring*

— Bill Peterson

where they can apply and further develop skills they've learned at GJG in a retail nursery setting.

Jonathan Faith, Al's Garden & Home manager, says, "Not only am I looking forward to this new set of students working alongside us, but my staff is too."

***"Not only am I looking forward to this new set of students work alongside us, but my staff is too.***

— Jonathan Faith, Al's Garden & Home Gresham, Store Manager

**T**he outreach project the Gresham Japanese Garden is most proud of is its horticulture program for adults with special needs. In 2019 we

# A Gift That Grows

**T**suru Island is one of our community's quiet gems — a place where healing, beauty, and cultural connections can be made. Maintained entirely by volunteers, the Japanese garden exists because of dedication, vision, and shared care.

Ten years ago, that same spirit led to the creation of our endowment fund. The purpose was simple but forward-looking: to build a permanent source of support for the garden's long-term maintenance. As part of that vision, we created the Touchstone Paver Campaign, where supporters can purchase an engraved paver, with every dollar going directly into the Endowment Fund. Today, thanks to thoughtful donors, the fund has grown to more than \$70,000.

Just as important, we have not needed to take any money from the endowment. Through careful stewardship and the hard work of our volunteers, we have been able to maintain the Japanese garden, and all of our other spaces without drawing on those funds. Our goal is to allow the endowment to continue growing until a time when future leadership and volunteers may need additional support to sustain the gardens' care.

Gardens are not one-time projects.

Paths must be maintained. Weeds must be pulled. Trees require pruning, and structures need ongoing attention. An endowment ensures that this care continues — not just this year, but decades from now.

Giving to the endowment is not only an investment in the organization's future — it can also be a thoughtful financial decision for you.

Charitable contributions may be tax-deductible too. For some donors, this reduces taxable income and makes it possible to give more generously. Others find it especially helpful when planning year-end gifts.

You may also give more than cash. Donating appreciated stocks or mutual funds directly to the endowment can be a tax-wise way to contribute. In many cases, this allows you to avoid paying capital gains taxes on the increase in value while potentially receiving a charitable deduction for the full value of the asset. It's a meaningful way to strengthen the Gresham Japanese Garden's future while making smart use of your resources.

An endowment gift is a statement of stewardship. It says that this place matters — not only to us today, but to those who will walk its paths years from now.

*"I've been both a volunteer and donor to the Gresham Japanese Garden for many years. I give to the Endowment Fund because I believe in thinking beyond today. We are all volunteers — there is no paid staff — and every one of us believes deeply in the Garden's value to our community. As we focus on the current renovation, I also want to help ensure that future needs can be met."*

- Mary Dickson

If the Gresham Japanese Garden has brought you peace, healing, or connection, we invite you to support its Endowment Fund. You may make a direct contribution by calling Dino Rocha at Edward Jones, or participate in our [Touchstone Paver Campaign with a \\$150 engraved paver](#), installed in Ebetsu Plaza — each one becoming a lasting part of the Garden while strengthening its financial future.

Together, we can ensure that this volunteer-built gem continues to thrive for generations.

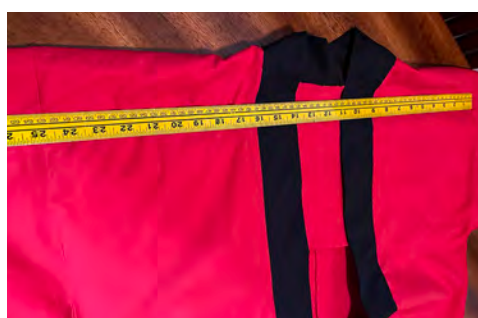
## Freestyle Ikebana



An advanced arrangement exploring the possibilities of creativity with plant materials.

*Materials: Curly willow and camellia*

## Happi Coats



A happi coat is a traditional Japanese short coat that is typically worn during festivals and special events, but can be quite expensive to purchase.

Our volunteer seamstresses have sewn 18. Hopefully by Yozakura we will have a few completed with our colors and custom design.

## Mason Josh is on the Island



All the bluestone, including the ADA-compliant strolling path, is being installed by Josh Bond of [Bond Stone Masonry](#). You will see him chiseling away on the island over the next couple of months.

Once the path is installed, the Japanese garden will be much more presentable. Thank you for your patience and understanding.

# Tsuru Island Renovation Renderings



*Looking southeast at Tsuru Island's future landscape. In this view, when you sit in the azumaya looking out you can will see an island of maples and beautiful boulder work.*

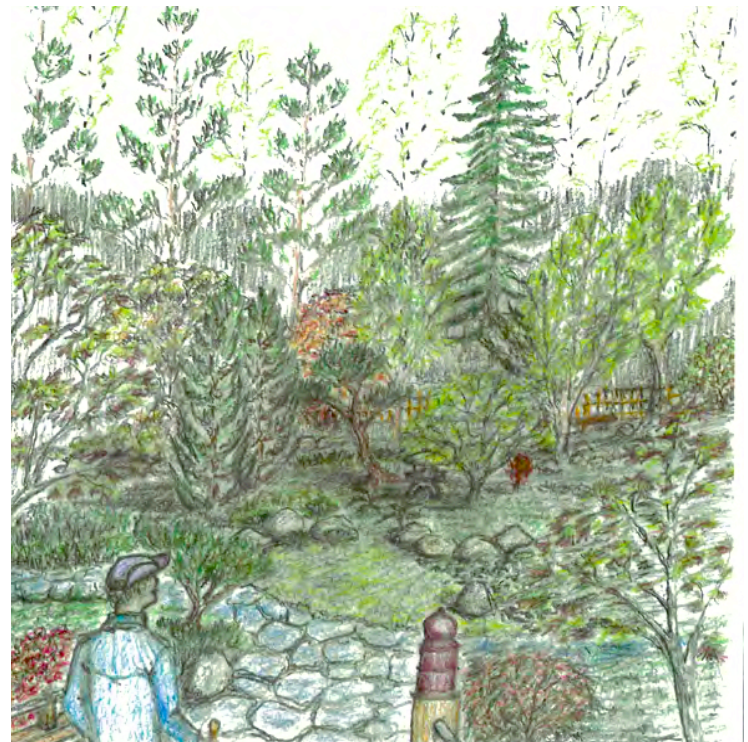


The depiction of Tsuru Island's renovation was graciously rendered by retired Landscape Architect Steve Stevens. Steve has also consulted on other projects in the Gresham Japanese Garden, including the design of the Hiroshima Peace Tree Garden adjacent to Ebetsu Plaza.

His other community involvements include serving on the Gresham Urban Forestry Subcommittee, Deer Glen HOA Design Review Committee, and singing in the Gresham Community Choir.



*East view looking past the first new basalt stone bridge. It must be May, the azaleas are in bloom.*



*At the end of the entrance bridge a tranquil view looking south.*

# Yozakura

## FESTIVAL SCHEDULE

**March 20-April 4 from 7:00-11:00pm**

Enjoy an evening stroll through Ebetsu Plaza and Ambleside Annex, where the cherry trees will be illuminated nightly.

**Saturday, March 21st**

**10am-4pm:** Specimen Tree & Shrub Sale, plus bonsai demonstrations throughout the day.

**6pm:** Macha tea demonstration.

**7:30pm:** Oregon Koto Kai performs with an ensemble sharing traditional Japanese music played on the koto.

**Saturday, March 28th**

**10am-4pm:** Specimen Tree & Shrub Sale, plus bonsai demonstrations throughout the day.

**6pm:** Kicks off with an energetic performance with a multi-instrument and Taiko drum performance by Takohachi Inc.

**7:30pm:** Oregon Koto Kai takes the stage with an ensemble sharing traditional Japanese music played on the koto. Their performance offers a serene and immersive cultural experience.

**Bring a chair and enjoy the performances, scenery, and traditional Japanese treats served by the amazing volunteers of the Gresham Japanese Garden.**

*This is a free cultural event sponsored by Riverview Bank, and a City of Gresham Community Enhancement grant.*



## Pruning Courses

**Introduction to the Aesthetic Pruning Approach: Thursday, April 9, 2026, 6-8pm, \$20 on Zoom**

**Bluestone Path Workshop with a Professional Stone Mason: Saturday, April 18, 2026, 9am-4pm – \$145 at GJG**

**Spring Pine Work: Sunday, May 3, 2026, 1-3pm, \$45 at the Gresham Japanese Garden**

[REGISTER FOR PRUNING COURSES HERE](#)



## Introduction to Beekeeping Seminar

**Monday, March 9, 2026, 6:30-8pm – Free in the Kyoudou Center**

Join us for this free community seminar. GJG volunteer Bruce Janes helps at a commercial apiary and is a member of three bee clubs. Bruce's philosophy is that to become a successful beekeeper is to learn as much as you can about the bees themselves. Co-instructor Jim Buck will talk about Flow Hives.

[RSVP on website](#) or [email sue@greshamjapanesegarden.com](mailto:sue@greshamjapanesegarden.com).

## Specimen Tree and Shrub Sale

**Saturday, March 21 and March 28, 2026, 10am-4pm – Behind the Kyoudou Center**

Choose from a variety of mature plants to make an instant impact to your landscape. We have maple trees, Red Twig Dogwood shrubs, Burning Bush, weeping Norway spruces, and more! Also, the new Bonsai Exhibition Plaza will be open for viewing with bonsai demonstrations throughout the day by bonsai master, Bobby Curtright.



## Workshops



**The Art of Bonsai: On the third Saturday, 1-3pm or third Thursday, 6-8pm – \$55**

**BOBBY CURTRIGHT, BONSAI MASTER:** March class will focus on repotting conifer trees. The tree for the project will be a *Tsuga mertensiana* (Mountain Hemlock.)

The project-based workshops are adapted to the level in your practice. Bobby Curtright was an apprentice to Bonsai Master Michael Hagedorn. Alongside his three-year apprenticeship, Bobby traveled to Japan for weeks at a time to study under Mr. Hagedorn's sensei, the famous Mr. Shinji Suzuki.



**Introduction to Ikebana: Tuesday, March 10, 2026, 1-3pm – \$50 in the Kyoudou Center**

**NANA BELLERUD, IKEBANA TEACHER:** March workshop brings some early spring flowers and their symbols and meanings. Also learn the fundamentals and core concepts of Ikebana. Students explore their creativity and turn their ideas into arrangements.

REGISTER ON WEBSITE UNDER 'HAPPENINGS'